



# Igniting Hope

Your Gift Today Helps Your Neighbor Tomorrow

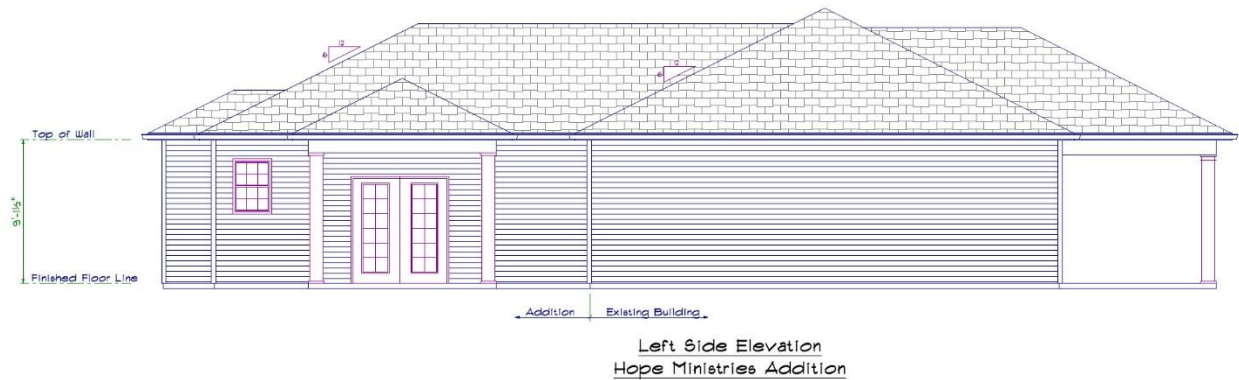
## Naming Opportunities

- 🔥 **\$50,000** - 1 - counseling wing
- 🔥 **\$25,000** - 2 - waiting rooms
- 🔥 **\$17,500** - 4 - pharmacy, counseling rooms, conference room
- 🔥 **\$10,000** - 8 - other exam rooms + 3 additional opportunities (e.g. kitchen, administrative offices, medical offices, etc.)

The projected cost of this addition is \$165,000

## Addition Drawings

### Left Side Elevation

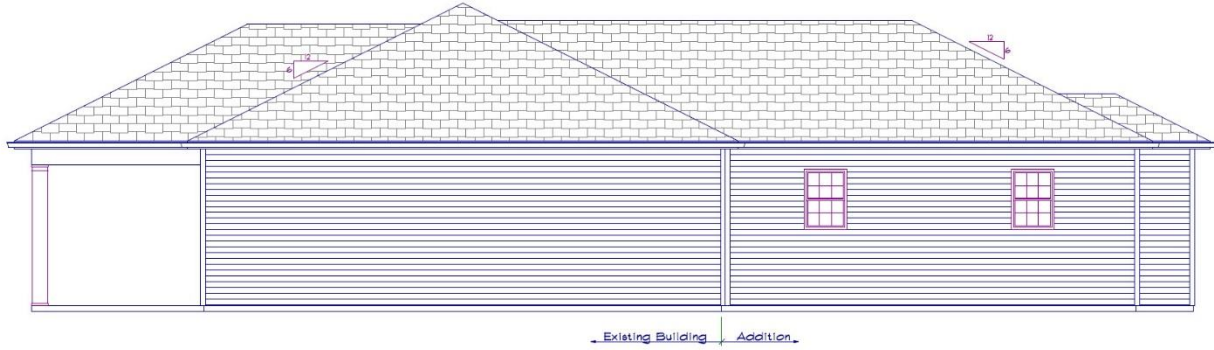


### Rear Elevation





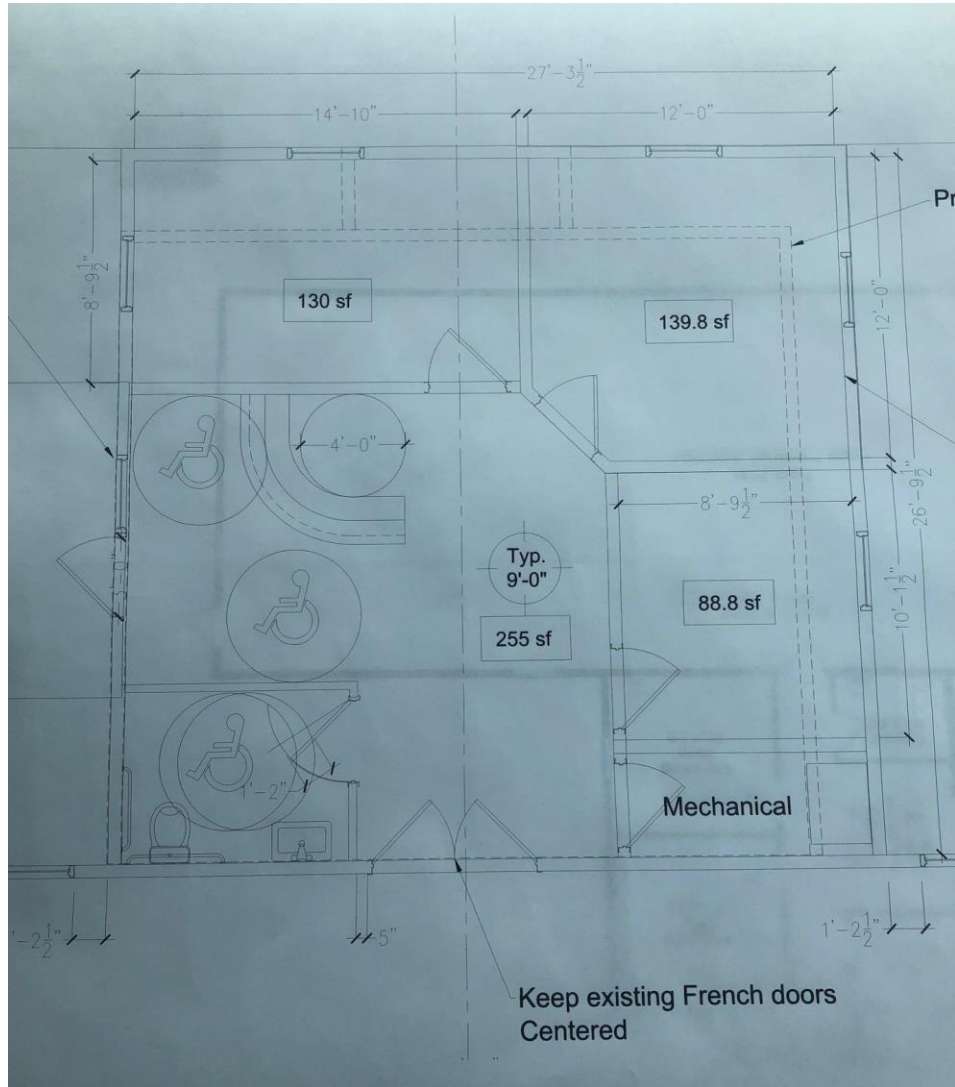
## Right Side Elevation



Right Side Elevation  
Hope Ministries Addition



## Floor Plan



**Help Us Achieve Our Goal with a Donation**  
Visit [www.hopewithin.org](http://www.hopewithin.org) for details or complete the pledge card.